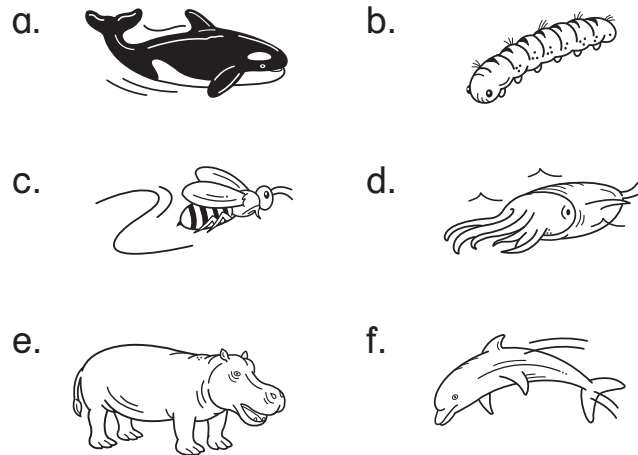


**A Write the letter.**

/ 6

1. squid \_\_\_\_\_
2. whale \_\_\_\_\_
3. caterpillar \_\_\_\_\_
4. dolphin \_\_\_\_\_
5. hippopotamus \_\_\_\_\_
6. bee \_\_\_\_\_



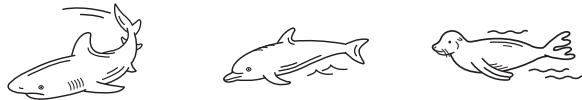
**B Circle.**

/ 4

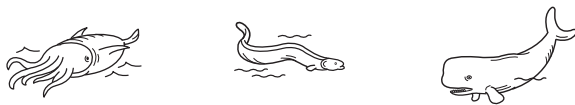
1. butterfly



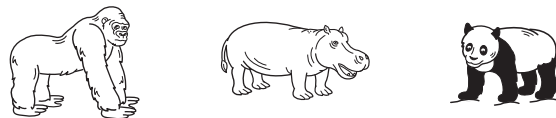
2. seal



3. eel



4. panda



**C Write.**

/ 4

bigger elephant biggest smaller

1. The elephant is \_\_\_\_\_ than the gorilla.
2. The monkey is \_\_\_\_\_ than the gorilla.
3. Which one is the biggest? The \_\_\_\_\_ is the \_\_\_\_\_

**D Write.**

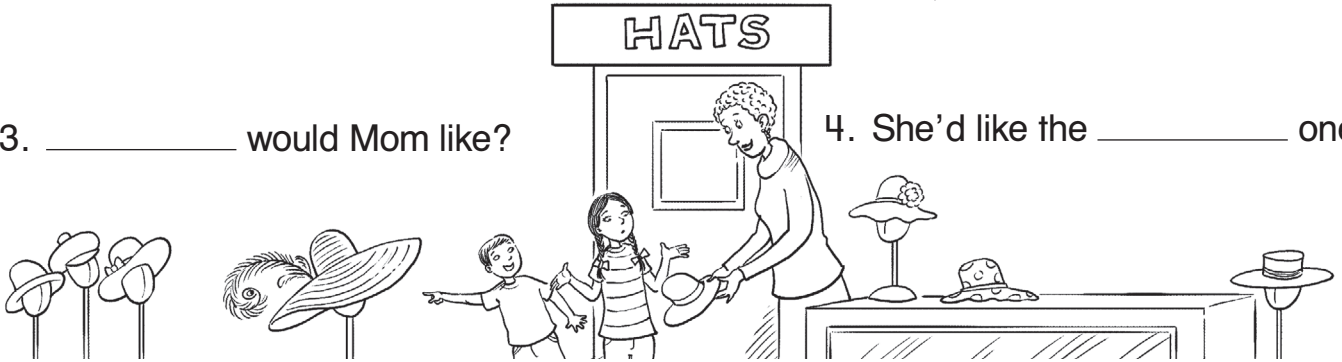
like one would please biggest I'd Which

1. Which one \_\_\_\_\_ you like?

2. \_\_\_\_\_ the smallest  
one, \_\_\_\_\_

3. \_\_\_\_\_ would Mom like?

4. She'd like the \_\_\_\_\_ one.



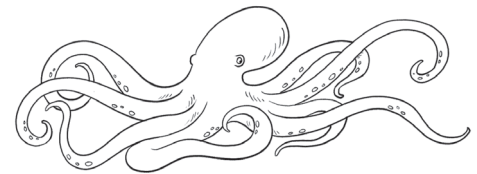
**E Listen and write.**



1. This is an \_\_\_\_\_

It weighs \_\_\_\_\_ kilograms.

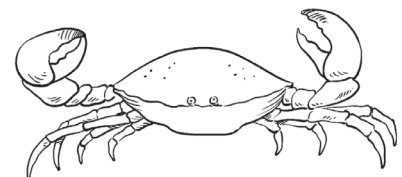
It is \_\_\_\_\_ meters long.



2. This is the world's biggest \_\_\_\_\_

It weighs \_\_\_\_\_ kilograms.

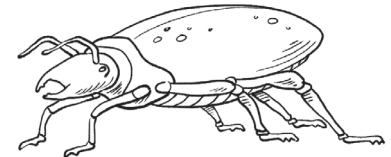
Its legs are \_\_\_\_\_ meters long.



3. This is the world's largest insect, a \_\_\_\_\_

It weighs \_\_\_\_\_ grams.

It is \_\_\_\_\_ centimeters long.

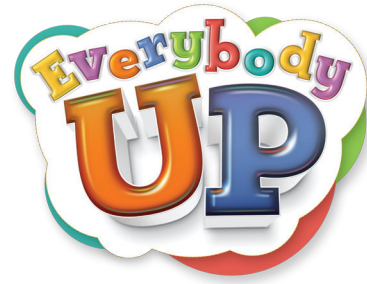


4. This is a very big \_\_\_\_\_

It weighs \_\_\_\_\_ kilograms.

It is \_\_\_\_\_ meters long.





## Cambridge Young Learners Practice Tests

The Cambridge Young Learners English examinations are an internationally recognized assessment standard for young learners aged 7 to 12. There are three levels: Starters, Movers, and Flyers; each one tests students' English proficiency in reading, writing, listening, and speaking.

The **Everybody Up** Test Center includes practice tests for the Cambridge Young Learners examinations. These have been created to provide students with specific practice in the style of the Cambridge Young Learners examinations. Even if you are not preparing your students for these examinations, you can still use the tests to create extra practice, review tests, or worksheets throughout the year.

While there is not a direct link between the content of these tests and the syllabus of **Everybody Up**, the practice tests include the vocabulary, structures, and task types that students can expect to meet in the relevant level of each examination. Although we have matched the practice tests to the appropriate level of **Everybody Up**, it is up to you to prepare your students for the practice tests by looking at the content and ensuring that you have covered relevant vocabulary areas and structures before administering the tests. See the chart to determine which level is best suited to your students' needs.

	starter	1	2	3	4	5	6
Cambridge YLE Tests	Towards Starters	Starters	Starters to Movers	Movers	Movers to Flyers	Flyers	Flyers

For more information, visit [www.candidates.CambridgeESOL.org](http://www.candidates.CambridgeESOL.org).