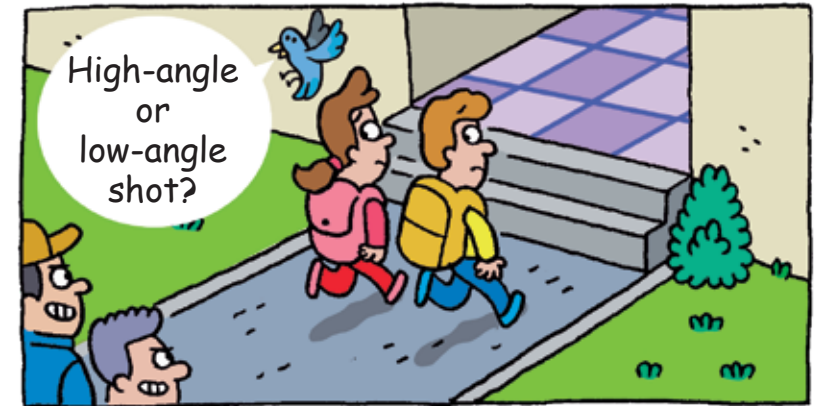
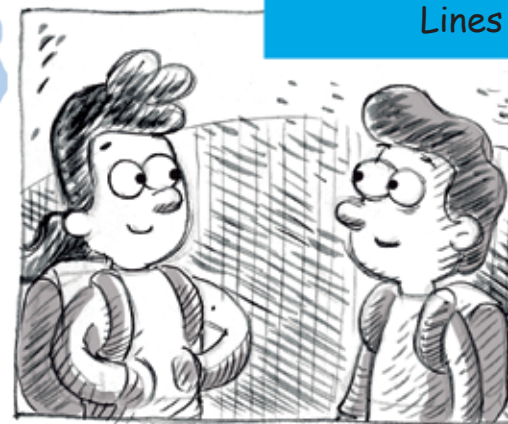


Let's learn about ...

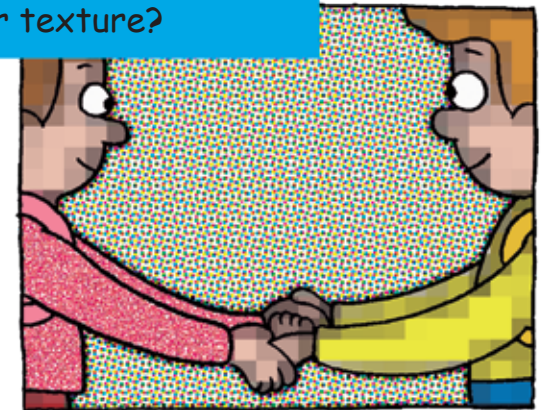
- lines, colour and texture
- high-angle and low-angle shots
- types of lighting



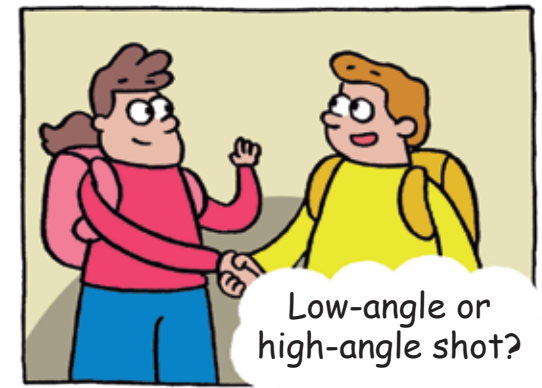
What's more important lines or colour?



Lines or texture?



Hard or soft light?



1 Watch.

2 Read the comic with a classmate.

3 Find out about different types of communication.

- What types are there?
- Which are easiest for you? Why?

Be mindful

4  001 Listen to the music. Write and draw things about yourself.

I'm quiet

I'm organized

I'm friendly

I'm helpful

I'm hardworking

I'm funny

I'm loud

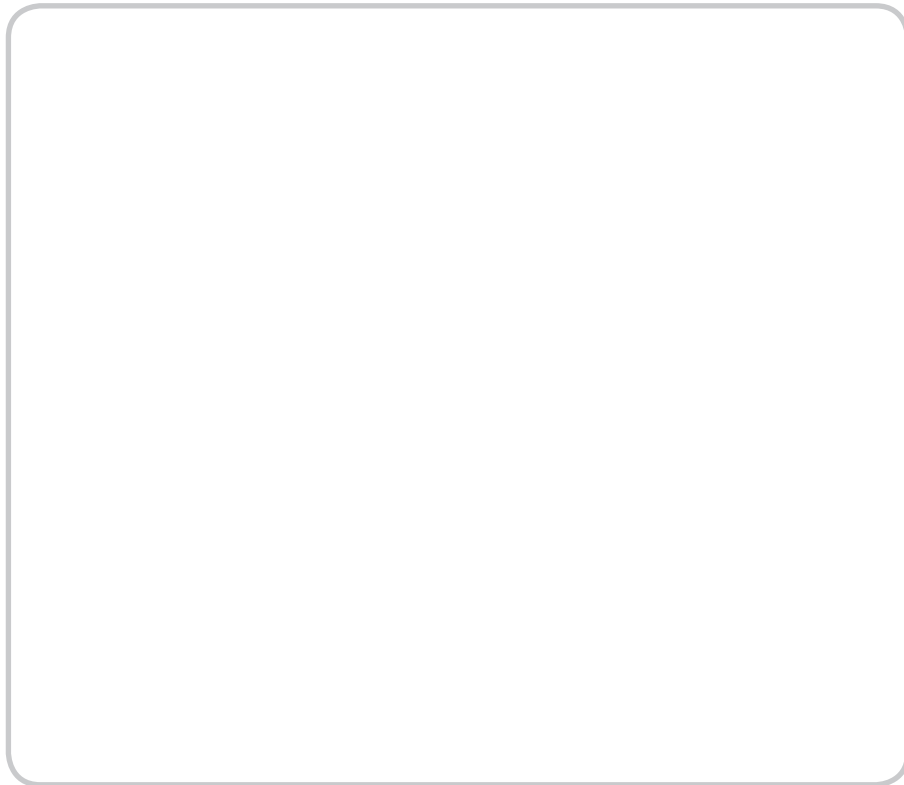
I'm kind

I'm confident

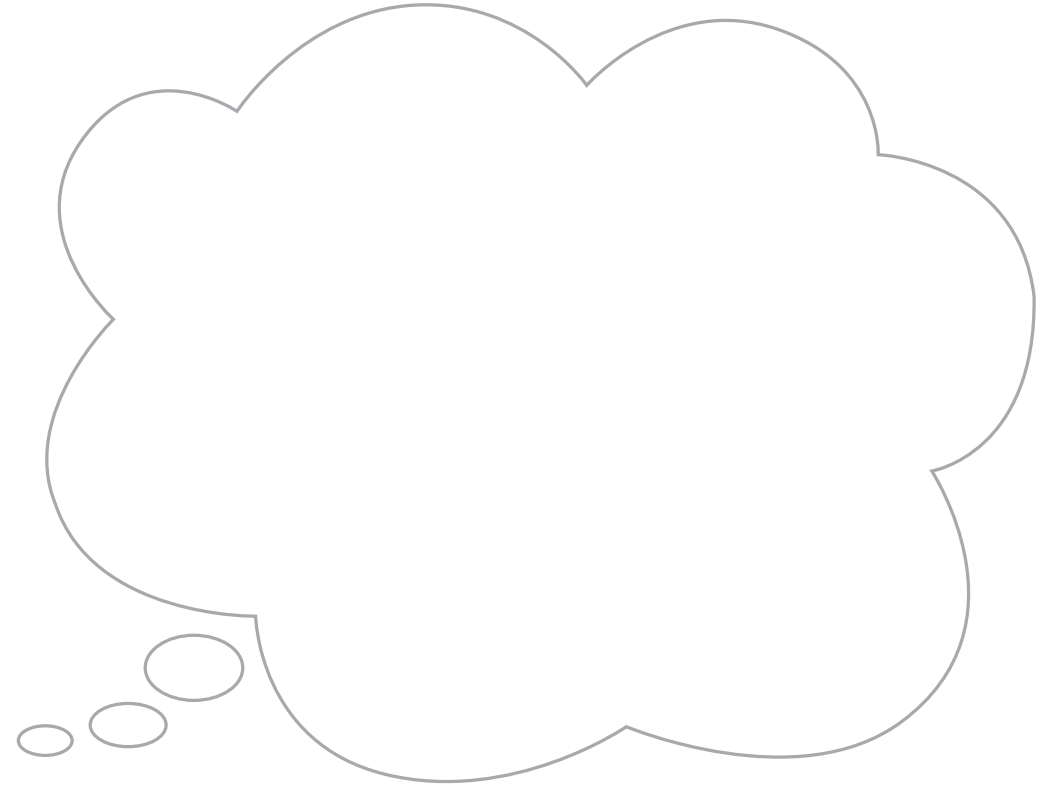
I'm clever

I'm calm

I'm shy



How I **see** myself.



How I **think** people see me.

How does illustration communicate?

Illustrations are a visualization made by an artist. They **communicate** ideas and emotions. **Illustrators** choose the types of **lines**, **colours** or **textures** for the message.

1  Look at each illustration and answer the questions with a classmate.

- What's more important, the lines or the colours?
- Are the colours bright, dark or pale?
- How do you think she feels?

Thinking
routine

Make connections



Talk about art

describe

In this illustration, ... are more important.

analyse

The illustrator used **dark** colours.

interpret

because she feels **sad**.



Create!

2 Colour the pictures to communicate different ideas using lines, colours and textures.



dark and scary



bright and beautiful

Be mindful

 001 Repeat this mantra while you work.

I can communicate my thoughts.
I can make a difference.

How does it make you feel?

happy

shy

excited

confident

Can we use different shots in comics?

Comics show characters from **high-angles** and **low-angles**. A **high-angle shot** is when we see the characters from **above**; and a **low-angle shot** is when we see them from **below**. Drawing characters this way creates dramatic **tension**.

1 Look and circle.

red = high-angle shot

blue = low-angle shot



X-Men comic, 1976



Dr. Strange comic, 1969



The Magnificent Ms. Marvel comic, 2019



The Mighty Thor comic, 1976

2 Which is your favourite comic? Why?

Talk about art


My favourite comic is **Ms. Marvel**, because...

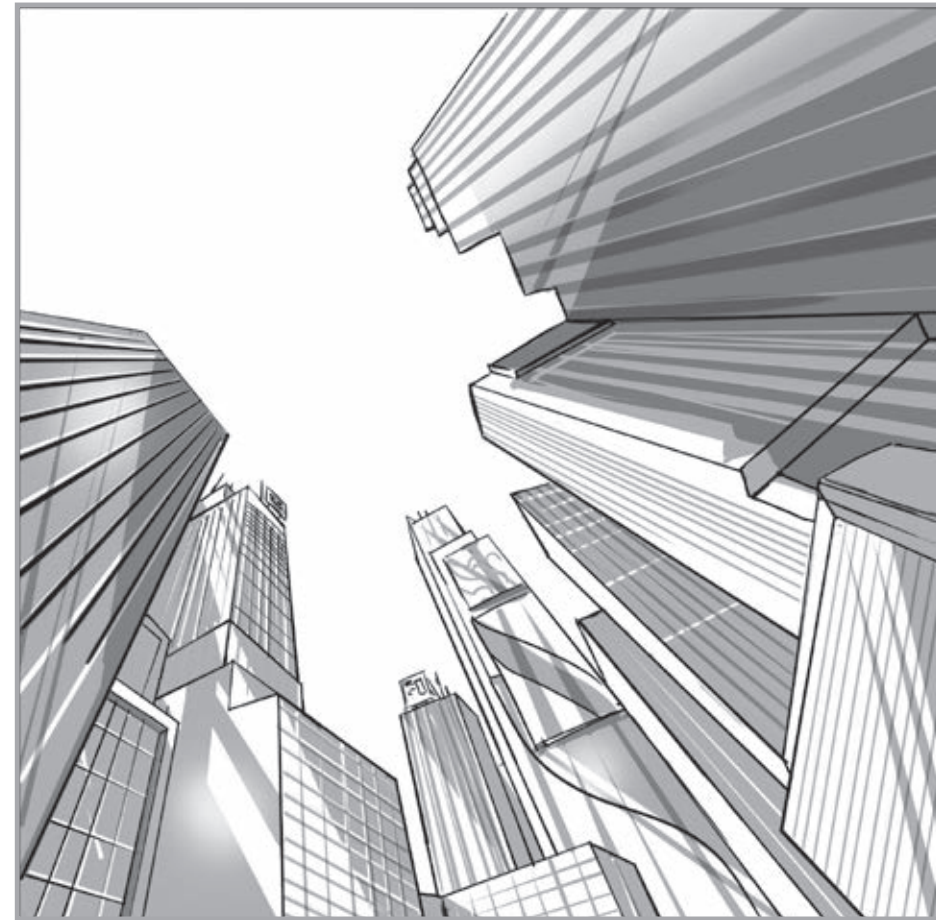
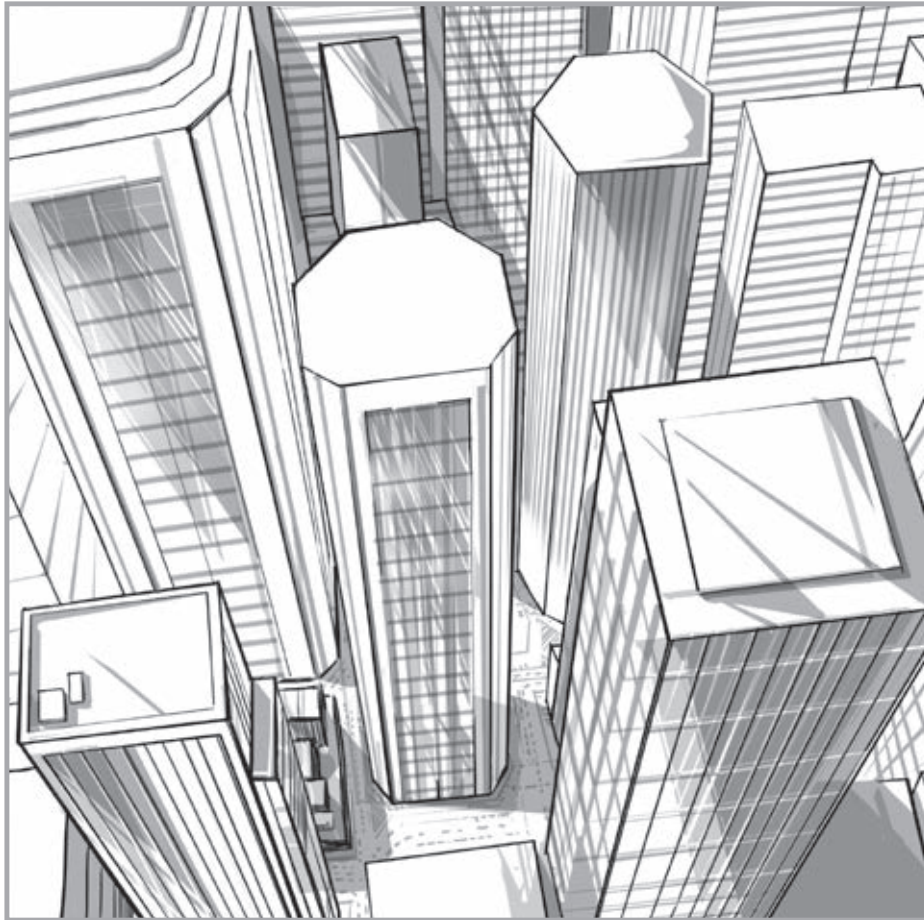


Talk about...
characters,
story, design

Create!

Use the
cut-out!

- 3  Create a superhero. Stick it in the correct shot.



Reflect

- 4 Read and colour the stars.

I can ... create a superhero with tension. ☆ ☆ ☆

I can ... explain the difference between high-angle and low-angle shots. ☆ ☆ ☆

Key

- ★ I'm not sure.
- ★★ I need some practice.
- ★★★ I understand.

What types of light can we use?

In **photography**, light can come from different places and produce **contrast**. It can be **behind**, **at the side** or **in front** of the subject. **Photographers** think about **light** before they take photos. **Light** can create different **effects** and different **emotions**.

1 Look, read and match.



Hard light creates shadows and a strong contrast.



Backlight illuminates the subject from behind.



Soft light creates a gradual transition from light to dark.

The light is behind the subject.



This is soft light.

I don't agree. I think it's backlight.



Create!

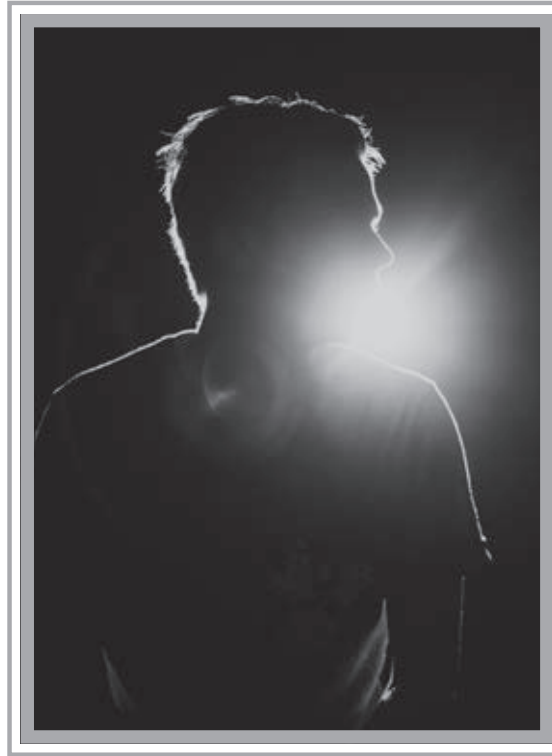
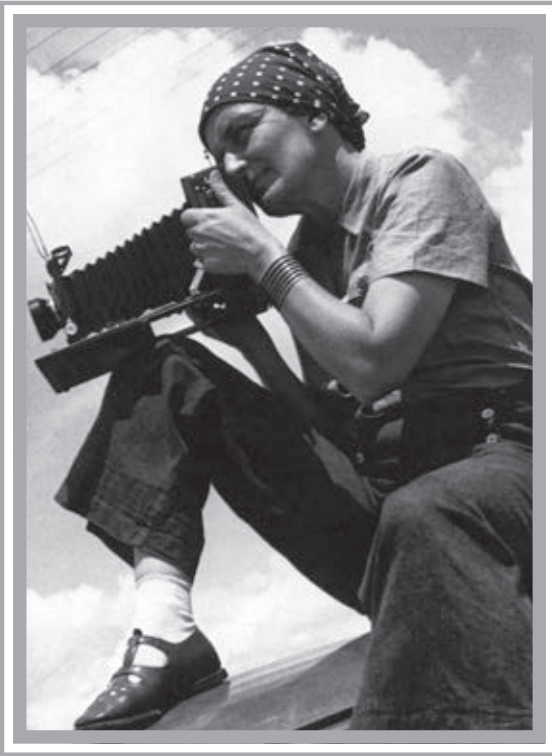
2  Watch.

3 Write the type of lighting under each photo.

soft light

hard light

backlight



4  Work in groups. Take turns to be the: model, lighting technician and photographer. Take photos with different lighting.



At home

Look at the lighting in your favourite family photo.



Image editing



How can we make a photomontage?

Step 1

Select two photos. Crop or cut out the parts you like.



Step 2

Combine the two photos to create a photomontage.



Give your classmates constructive feedback!



Portrait of Dora Maar, Man Ray, 1936

WOW

Dora Maar was a photographer. She experimented with different techniques to create strange and dramatic photomontages.

Create and review

*'Art is a technique
of communication.'*

Claes Oldenburg



Review

- 1  Read the comic on page 5 again.



Choose and then colour
the drawing.

bright

dark

- 2 Look and choose the shot.

high-angle shot

low-angle shot



- 3 Choose and then shade
the drawing.



hard lighting

soft lighting

Superhero angles

